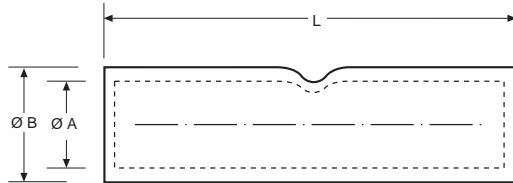


MANGUITOS DE TUBO DE COBRE

CONEXIONES ELECTRICAS, S.A.



Copper Joints (Muffs)
Manchons de cuivre



Material:
SFCU S/DIN 1787-73
Hasta M9-11
Resto: SECU S/ DIN 1787-73
ESTAÑADO TINNED ETAMÉ

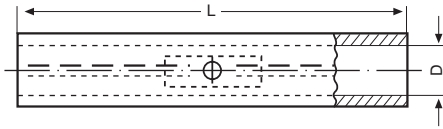
CABLE		Ø A	Ø C	L	HERRAMIENTA Tool / Outil	REF.	CABLE		Ø A	Ø C	L	HERRAMIENTA Tool / Outil	REF.
Norm.	Flex.						Norm.	Flex.					
1,5	1	1,5	3	15	A6, TP3	M1,5 - 3	63	50	11,5	14	48	T95, T150, PHC	M11 - 14
2,5	1,5	2,5	4	15		M2,5 - 4	80	63	12	15	50		M12 - 15
4	2,5	3	5	22		M3 - 5	95	70	13,5	16,5	52		M13 - 16
6	4	4	6	22		M4 - 6	120	95	15,5	19	62	T150, PHC, HMS	M15,5 - 19
10	6	5	7	28	T50, TP3	M5 - 7	150	120	17	21	66		M17 - 21
16	10	6	8	31	T50, TP5	M6 - 8	185	150	19	23	75		M19 - 23
25	16	7	9	32	T50, T95	M7 - 9	240	185	21	25,5	80		M21 - 25,5
35	25	8	10	34		M8 - 10	300	240	23	28	94	PHC, PHH	M23 - 28
40	35	9	11	40		M9 - 11	400	300	27	33	110		M27 - 33
50	35	10,2	12,7	45		M10 - 13	500	400	30	36	130	PHP, U20	M30 - 36
						600	500	34	40	150	M34 - 40		

MANGUITOS DE COBRE Y ALUMINIO, APRIETE HEXAGONAL

CONEXIONES ELECTRICAS, S.A.



Copper and aluminium muffs (Ferrules) for hexagonal pressing
Manchons en cuivre et aluminium sertissage hexagonal



Material:
E-Cu DIN 1787-73
Al 99,5

PIEZAS DE DIMENSIONAMIENTO CENTRO EUROPEO
Central Europe Dimensions

CABLE mm ²	L	Ø D	MATRIZ HEXAGONAL Die size	NÚMERO DE APRIETES Number of crimps		REF.
				TENAZA Handtool	Hydraulic	
CU 6	30	3,8	6	1 - 1		GMC 6
10	30	4,5	6	1 - 1		GMC 10
16	50	5,5	8	2 - 2		GMC 16
25	50	7	10	2 - 2		GMC 25
35	50	8,2	12	2 - 2		GMC 35
50	55	10	14	3 - 3		GMC 50
70	55	11,5	16	3 - 3		GMC 70
95	70	13,5	18	4 - 4	2 - 2	GMC 95
120	70	15	20	4 - 4	2 - 2	GMC 120
150	80	17	22	5 - 5	2 - 2	GMC 150
185	85	19	25	5 - 5	2 - 2	GMC 185
240	90	21,5	28		2 - 2	GMC 240
300	100	24	32		2 - 2	GMC 300
ALU 25	70	6,8	12	4 - 4		GMA 25
35	85	8	14	5 - 5		GMA 35
50	85	10	16	5 - 5	3 - 3	GMA 50
70	105	11,5	18	6 - 6	3 - 3	GMA 70
95	105	13,5	22	6 - 6	3 - 3	GMA 95
120	105	15	22	6 - 6	3 - 3	GMA 120
150	125	16,5	25	7 - 7	3 - 3	GMA 150
185	125	18,5	28	7 - 7	3 - 3	GMA 185
240	145	21,5	32		3 - 3	GMA 240
300	145	24,5	34		3 - 3	GMA 300

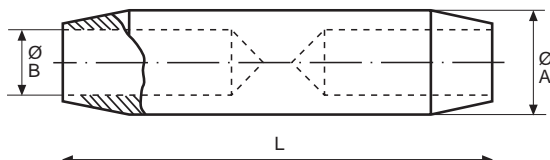
MANGUITO COBRE MEDIA TENSION

CONEXIONES ELECTRICAS, S.A.



Apriete hexagonal

Splice joint for copper cables / Hexagonal crimping
Manchon de cuivre moyenne tension / Sertissage hexagonal



Material:
CUETP S/UNE 37150-86
PASIVADO-UNCOATED

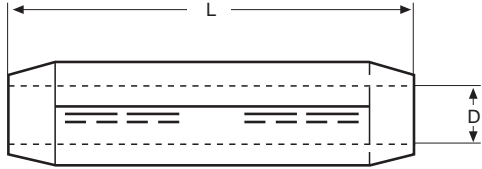
CABLE mm ²	DIMENSIONES / Dimensions			HERRAMIENTA Tool / Outil	REF.
	Ø A	Ø B	L		
25	12,2	7	65	PHC - PHH	MMC - 25
35	12,2	8	65		MMC - 35
50	12,2	9,5	65		MMC - 50
70	21	11	100		MMC - 70
95	21	13	100		MMC - 95
120	21	14,5	100		MMC - 120
150	21	16	100		MMC - 150
185	26,2	18	140		MMC - 185
240	26,2	20	140		MMC - 240

MANGUITOS DE COBRE Y ALUMINIO, APRIETE HEXAGONAL 10-30 kV

CONEXIONES ELECTRICAS, S.A.



Copper and aluminium muffs (Ferrules) Medium Voltage 10-30 kV for hexagonal pressing
Manchons en cuivre et aluminium sertissage hexagonal



Material:
E-Cu
Al 99,5



PIEZAS DE DIMENSIONAMIENTO CENTRO EUROPEO
Central Europe Dimensions

CABLE mm ²	L	Ø D	MATRIZ HEXAGONAL Die size	NÚMERO DE APRIETES Number of crimps		REF.
				TENAZA Handtool	Hydraulic	
CU 25	55	7	10	2 - 2		GMMC 25
35	55	8,2	12	2 - 2		GMMC 35
50	70	10	14	3 - 3	1 - 1	GMMC 50
70	70	11,5	16	3 - 3	1 - 1	GMMC 70
95	95	13,5	18	4 - 4	2 - 2	GMMC 95
120	95	15,5	20		2 - 2	GMMC 120
150	110	17	22		2 - 2	GMMC 150
185	110	19	25		2 - 2	GMMC 185
240	115	21,5	28		2 - 2	GMMC 240
300	120	24	32		2 - 2	GMMC 300
ALU 35	95	8	14	4 - 4		GMMA 35
50	95	10	16	4 - 4	2 - 2	GMMA 50
70	100	11,5	18	4 - 4	2 - 2	GMMA 70
95	105	13,5	22	4 - 4	2 - 2	GMMA 95
120	110	15	22	4 - 4	2 - 2	GMMA 120
150	110	16,5	25		2 - 2	GMMA 150
185	130	18,5	28		2 - 2	GMMA 185
240	130	21	32		2 - 2	GMMA 240
300	135	23,5	34		2 - 2	GMMA 300