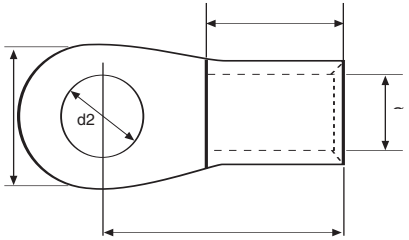


TERMINALES DIN 46 234



DIN 46 234 copper Lugs
Cosses cuivre DIN 46 234



Material:
ECU
ESTAÑADO TINNED



CABLE mm ²	DIMENSIONES / Dimensions					HERRAMIENTA Tool / Outil	REF.	CABLE mm ²	DIMENSIONES / Dimensions					HERRAMIENTA Tool / Outil	REF.	
	d2	B	l	E	d				d2	B	l	E	d			
0,5-1,5	3,2	6,0	11,0	5,0	1,6	TP 3	J 1-3	25-35	6,5	15,0	26,0	12,0	9,0	T50	J 35-6	
0,5-1,5	3,7	6,0	11,0	5,0	1,6		J 1-3,5	25-35	8,4	16,0	26,0	12,0	9,0		J 35-8	
0,5-1,5	4,3	8,0	12,0	5,0	1,6		J 1-4	25-35	10,5	18,0	27,0	12,0	9,0		J 35-10	
0,5-1,5	5,3	10,0	13,0	5,0	1,6		J 1-5	25-35	13,0	22,0	31,0	12,0	9,0		J 35-12	
1,5-2,5	3,2	6,0	11,0	5,0	2,3		J 2-3	25-35	17,0	28,0	36,0	12,0	9,0		J 35-16	
1,5-2,5	3,7	6,0	11,0	5,0	2,3		J 2-3,5	35-50	6,5	18,0	34,0	16,0	11,0		J 50-6	
1,5-2,5	4,3	8,0	12,0	5,0	2,3		J 2-4	35-50	8,4	18,0	34,0	16,0	11,0		J 50-8	
1,5-2,5	5,3	10,0	14,0	5,0	2,3		J 2-5	35-50	10,5	18,0	34,0	16,0	11,0		J 50-10	
1,5-2,5	6,5	11,0	16,0	5,0	2,3		J 2-6	35-50	13,0	22,0	36,0	16,0	11,0		J 50-12	
1,5-2,5	8,4	14,0	17,0	5,0	2,3		J 2-8	35-50	17,0	28,0	40,0	16,0	11,0		J 50-16	
4 - 6,0	4,3	8,0	14,0	6,0	3,6		J 6-4	50-70	8,4	22,0	38,0	18,0	13,0		T 95	J 70-8
4 - 6,0	5,3	10,0	15,0	6,0	3,6		J 6-5	50-70	10,5	22,0	38,0	18,0	13,0			J 70-10
4 - 6,0	6,5	11,0	16,0	6,0	3,6		J 6-6	50-70	13,0	22,0	38,0	18,0	13,0			J 70-12
4 - 6,0	8,4	14,0	19,0	6,0	3,6		J 6-8	50-70	17,0	28,0	42,0	18,0	13,0			J 70-16
4 - 6,0	10,5	18,0	21,0	6,0	3,6		J 6-10	70-95	8,4	24,0	42,0	20,0	15,0			J 95-8
6-10	5,3	10,0	16,0	8,0	4,5		J 10-5	70-95	10,5	24,0	42,0	20,0	15,0			J 95-10
6-10	6,5	11,0	17,0	8,0	4,5	J 10-6	70-95	13,0	24,0	42,0	20,0	15,0	J 95-12			
6-10	8,4	14,0	20,0	8,0	4,5	J 10-8	70-95	17,0	28,0	44,0	20,0	15,0	J 95-16			
6-10	10,5	18,0	21,0	8,0	4,5	J 10-10	95-120	10,5	24,0	44,0	22,0	16,5	PHC	J 120-10		
6-10	13,0	22,0	23,0	8,0	4,5	J 12-10	95-120	13,0	24,0	44,0	22,0	16,5		J 120-12		
10-16	6,5	11,0	20,0	10,0	5,8	TP 5	J 16-6	95-120	17,0	28,0	48,0	22,0	16,5	J 120-16		
10-16	8,4	14,0	22,0	10,0	5,8		J 16-8	120-150	10,5	30,0	50,0	24,0	19,0	J 150-10		
10-16	10,5	18,0	24,0	10,0	5,8		J 16-10	120-150	13,0	30,0	50,0	24,0	19,0	J 150-12		
10-16	13,0	22,0	26,0	10,0	5,8		J 16-12	120-150	17,0	30,0	50,0	24,0	19,0	J 150-16		
16-25	6,5	12,0	25,0	11,0	7,5	T 50	J 25-6	150-185	10,5	36,0	50,0	28,0	21,0	J 185-10		
16-25	8,4	16,0	25,0	11,0	7,5		J 25-8	150-185	13,0	36,0	50,0	28,0	21,0	J 185-12		
16-25	10,5	18,0	26,0	11,0	7,5		J 25-10	150-185	17,0	36,0	50,0	28,0	21,0	J 185-16		
16-25	13,0	22,0	31,0	11,0	7,5		J 25-12	185-240	10,5	38,0	56,0	32,0	23,5	J 240-10		
16-25	17,0	28,0	35,0	11,0	7,5		J 25-16	185-240	13,0	38,0	56,0	32,0	23,5	J 240-12		
									185-240	17,0	38,0	56,0	32,0	23,5	J 240-16	