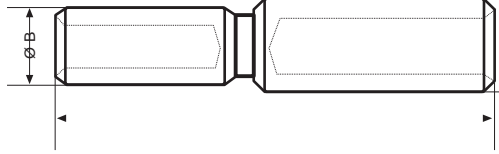


# مواسير موصلات الألمنيوم ذات الجهد المنخفض للتخفيض



Aluminium joint - Commercial cable lugs - Crimping by punching - Low Voltage  
Manchons de Aluminium - Cosses de cuivre - Sertissage per poinçonnage - Basse Tension



المادة:

CUETP S/UNE 37150-86

AL 99,5 S/UNE 38114-79

مُخَمَّل غير مطلي

| المرجع       | الأداة<br>Tool / Outil       | L     | Ø<br>B | Ø<br>A | كابل مم <sup>2</sup> |
|--------------|------------------------------|-------|--------|--------|----------------------|
| AM 50 - 35   | سنيك وكبس PHH<br>Punch & Die | 100   | 20     | 20     | 50 - 35              |
| AM 70 - 35   |                              | 100   | 20     | 20     | 70 - 35              |
| AM 70 - 50   |                              | 100   | 20     | 20     | 70 - 50              |
| AM 95 - 35   |                              | 100   | 20     | 20     | 95 - 35              |
| AM 95 - 50   |                              | 100   | 20     | 20     | 95 - 50              |
| AM 120 - 95  |                              | 121   | 20     | 25     | 120 - 95             |
| AM 150 - 95  |                              | 121   | 20     | 25     | 150 - 95             |
| AM 150 - 120 |                              | 133   | 25     | 25     | 150 - 120            |
| AM 185 - 150 |                              | 123,5 | 25     | 32     | 185 - 150            |
| AM 240 - 95  |                              | 115   | 20     | 32     | 240 - 95             |
| AM 240 - 150 |                              | 133   | 25     | 32     | 240 - 150            |
| AM 300 - 240 |                              | 155   | 32     | 36     | 300 - 240            |